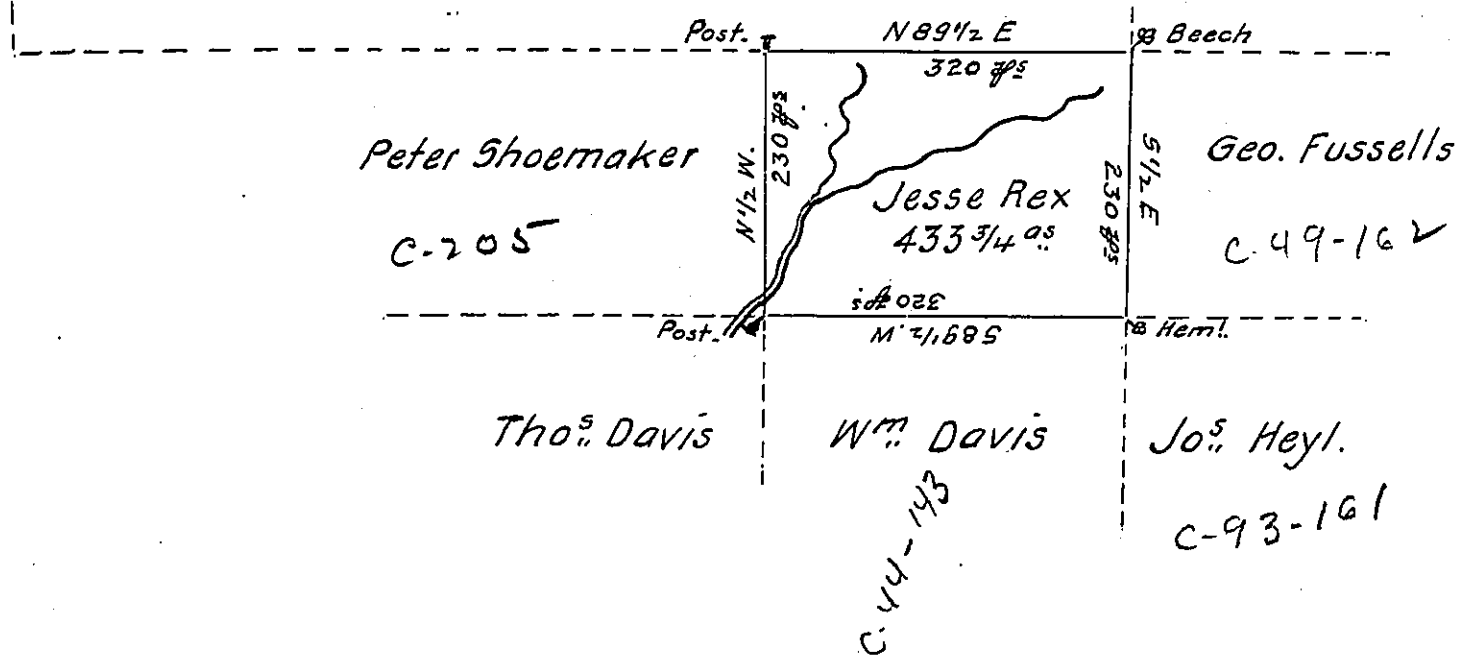


C. 93-55

Mathias - Holstein.



C. 44-143

A draught of a tract of Land called _____ Situate in the
 County of Luzerne, adjoining George Fussell and Others Survey'd ~~May~~ the
 third day of May 1793 for Jesse Rex in pursuance of a Warrant bearing
 date the 14th day of March 1793, Containing four hundred & thirty three
 Acres and three Quarters and the allowance of Six $\frac{1}{2}$ Cent for Roads &c.
 To Daniel Brodhead Esq: }
 Surveyor General. } Anty. Grothers D.S.

IN TESTIMONY that the above is a copy of the original remaining on file in
 the Department of Internal Affairs of Pennsylvania, made
 conformably to an Act of Assembly approved the 16th day of
 February, 1833, I have hereunto set my Hand and caused
 the Seal of said Department to be affixed at Harrisburg,
 this second day of August 1906

Loach D. Brown
 Secretary of Internal Affairs.